



The Rock Jr. TM

Front Rest

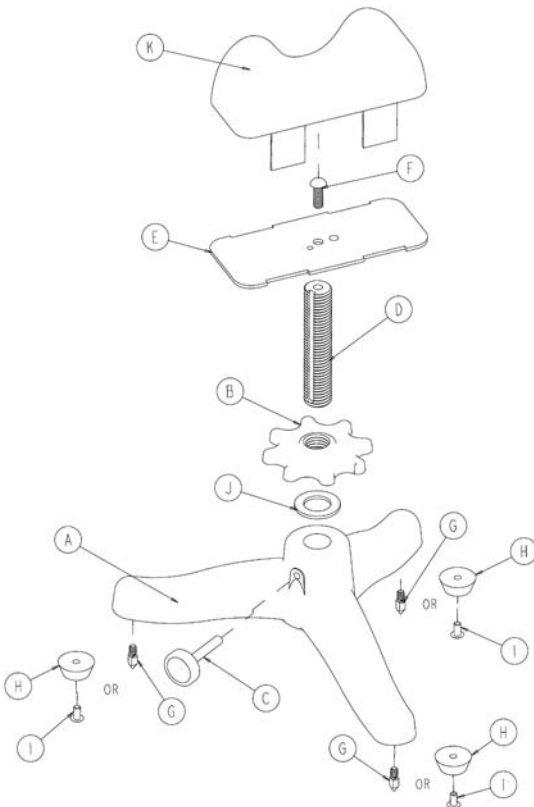


–Instructions–

Assembly Instructions

The Rock Jr. Front Rest comes to you unassembled, but will be range ready in minutes. Make sure your Rock Jr. has all the following components: (Please note: We constantly work to improve our products. Some parts may vary slightly in appearance from those illustrated.)

- A. Base - #456-492
- B. Elevation Wheel - #836-356
- C. Center Post Lock Screw - #614-479
- D. Center Post - #637-132
- E. Cradle Plate - #599-814
- F. Cradle Plate Screw - #132-865
- G. Spike Foot (3) - #754-434
- H. Rubber Foot (3) - #377-578
- I. Rubber Foot Attachment Screw (3) - #372-168
- J. Nylon Thrust Washer - #273-178
- K. Front Rest Bag - #117-187



Tools Needed: Small Phillips screwdriver, small adjustable-jaw wrench.

Sequence of Assembly - Please read through all steps of assembly before beginning assembly process. (See illustration 1 for specific item locations.)

1. Attach the Cradle Plate (E) to the Center Post (D) with the Cradle Plate Screw (F). The Cradle Plate features two alignment "dimples" stamped near the hole in its center. One dimple is positioned on the left-to-right centerline of the Cradle Plate, while the other is "offset" 30 degrees from the centerline. (See illustration 2) The Rock Jr. utilizes the offset dimple to index the Cradle Plate to the Center Post. Align the groove in the Center Post with the dimple projecting downward while installing the screw. Tighten securely with Phillips screwdriver.
2. Thread the Elevation Wheel (B) onto the Center Post approximately half its length.
3. Slip the Nylon Thrust Washer (J) over the bottom end of the Center Post, under the Elevation Wheel.
4. Install Feet - Note: You must decide which style of foot to use, which is determined by the surface upon which you will use the Rock Jr.
 - a. Spike Feet - Thread Spike Feet (G) into corresponding holes in the underside of the Base (A) legs. Tighten securely using adjustable-jaw wrench.
 - b. Rubber Feet - Push Rubber Foot Attachment Screws (I) through recessed side of Rubber Feet (H). Thread the Screws into corresponding holes in the underside of the Base (A) legs. Tighten with Phillips screwdriver only until the rubber starts to compress. Do not over tighten. Doing so will force the head of the screw through the Rubber Foot.
5. Start the Center Post Lock Screw (C) a few turns into its threaded hole in the Base, but not far enough to interfere with the installation of the Center Post.
6. Insert the bottom end of the Center Post into the corresponding hole on the top of the Base. Align the groove in the Center Post with the Center Post Lock Screw and turn the Lock Screw in just short of making contact with the bottom of the groove.
7. Fill Front Rest Bag.
 - a. Remove Bag spout from spout pocket.
 - b. Fill the bag through the spout with your chosen filler (we recommend fine, dry sand, or other dry, inert fillers. Filling is made easier if a rigid tube such as a large rifle cartridge case with the head removed is inserted in the filling spout. This will keep the spout open during filling.

- c. A small, flat-faced rod may be inserted in the spout to help pack the filler if desired.
 - d. When the bag has been filled to your satisfaction, fold the spout over and tuck under the pocket.
8. Attach Front Rest Bag to the Cradle using the hook and loop tabs.

Instructions for Use

1. Set the Rock Jr. on the shooting table or bench. The Rock Jr. base is in the shape of the letter "Y". The lower leg of the "Y" should be pointing to the rear, away from the target.
2. Place the rifle forend between the ears of the Front Rest Bag.
3. If you wish to use a rear bag, position it under the rear of the rifle's buttstock so the toe of the buttstock overhangs the bag by approximately 1".
4. Loosen the Center Post Lock Screw and use the elevation wheel to adjust the rest height so the rifle is lined up vertically with the target. Tighten the Center Post Lock Screw to secure the height at this elevation.
5. For fine adjustments in elevation, adjust the rear bag by manipulating it with the non-shooting hand.
6. For lateral adjustments, shift the rear bag to the right or left, using the non-shooting hand.

Limited Warranty

Every Caldwell product is warranted to be free of defects in materials and workmanship for a period of one (1) year from the date of original purchase. Caldwell will, at its option, repair or replace without charge, except for transportation costs, parts that fail under normal use and service when operated and maintained in accordance with our Instructions. This warranty does not apply to normal wear or to items whose life is dependent upon their use and care. This warranty is in lieu of all other warranties, expressed or implied and releases Caldwell, its affiliates, and its vendors from all other obligations and liabilities.

Instructions # 562-385

Product # 323-225

A **Battenfeld**[™] Product
Technologies, Inc.

5885 W Van Horn Tavern Rd. • Columbia, MO 65203
Visit our web site at www.caldwellshooting.com